

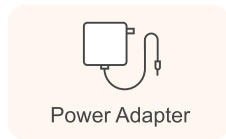
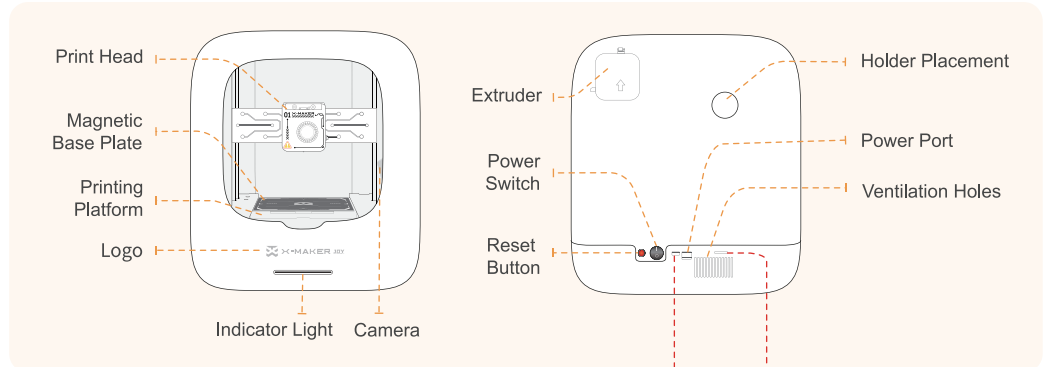


Scan QR code to get started

Quick Guide



Packing List



⚠ The USB Port & SD Card Slot are for machine debugging only.

App Download and Installation



X-MAKER

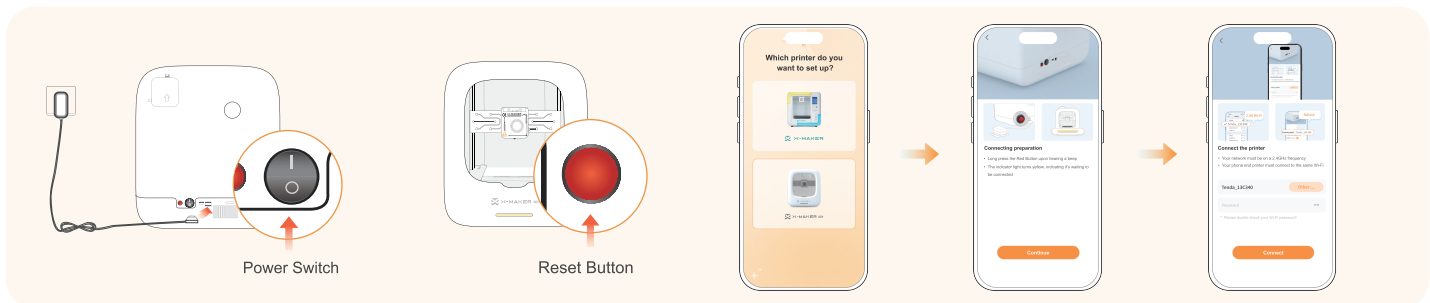
- For Android Tablet / iPad / Smartphones
<https://www.aoseed.com/pages/apps-downloads>
Or search "XMAKER" in Googleplay / App Store
- For Windows PC
<https://www.aoseed.com/pages/apps-downloads>



X-PRINT

- For Windows PC
<https://www.aoseed.com/pages/apps-downloads>
X-PRINT is 3D slicer software available only for Windows.

Connect 3D Printer



- Keep your hands dry. Take out the adapter and connect the power. Switch on the "Power Switch".
- Open the X-MAKER App and select X-MAKER JOY.
- Long press the red "Reset Button" until you hear a beep. The indicator light will turn solid yellow.
- Enter the correct Wi-Fi password, then tap Connect (ensure the Wi-Fi frequency is 2.4GHz).

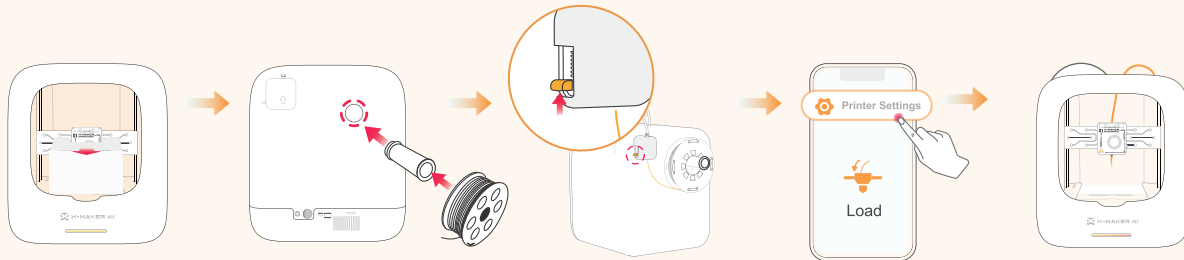
⚠ Connection Failed

- Ensure the printer and devices are connected to the same 2.4GHz Wi-Fi network.
- Restart the App or Printer, then try connecting again later.



How to Start

Install the Filament

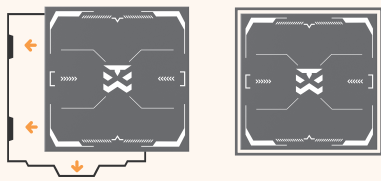


- Remove the nozzle protective foam.
- Insert the holder into the placement hole, and put the filament spool on the holder.
- Push the orange handle upward a little, then insert the filament tip into the inlet until the filament enters into the Extruder.
- Go to App > Printer Settings > Load. Click "Load". Then the nozzle will be automatically heated. The filament will be loaded then and the loading completes until the filament comes out from the nozzle.

⚠ Cut the filament aslant and make it straightened.

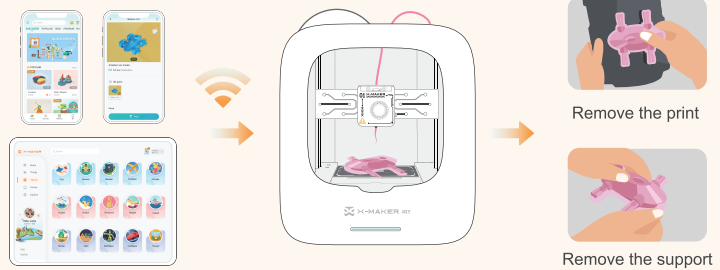


Place the Base Plate



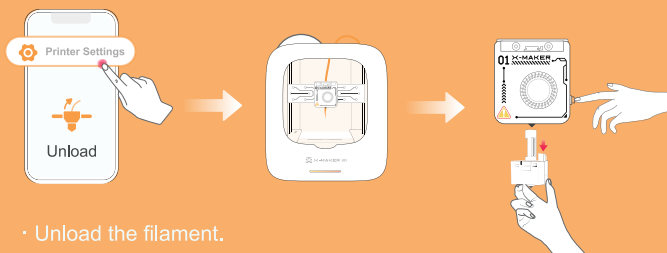
- Ensure the base plate is clean & flat, and aligned with the platform.

Model Printing and Removal



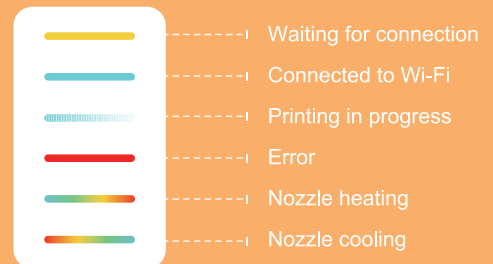
- Easy-to-use one-click printing with the X-MAKER App.
- X-MAKER App > Things, one-click printing.
- X-MAKER App > Theme (or Design), DIY your own model to print.

Quick Swap Nozzle



- Unload the filament.
- Wait for the nozzle to cool down to below 45 °C.
- Press the orange button and take off the nozzle with a little force.

Indicator Light



Notes

- AOSEED filaments are recommended. Do not frequently change filaments of various brands to avoid nozzle jamming.
- Please note that the app versions available for installation may vary on different platforms.
- Recommended ambient temperature for using the printer is 0-35 °C. Please turn off the printer when not in use.
- For more information, please visit www.aoseed.com.

